



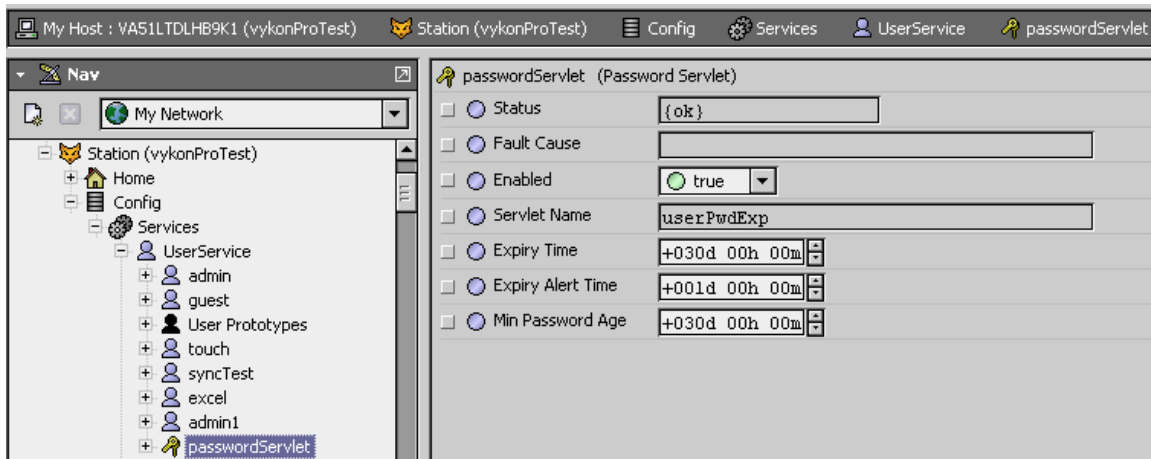
vykonProUser Module

vykonPro - PasswordServlet

The Password Servlet is used in the station to manage user password expiration. The Password Servlet component is located in the vykonProUser palette.

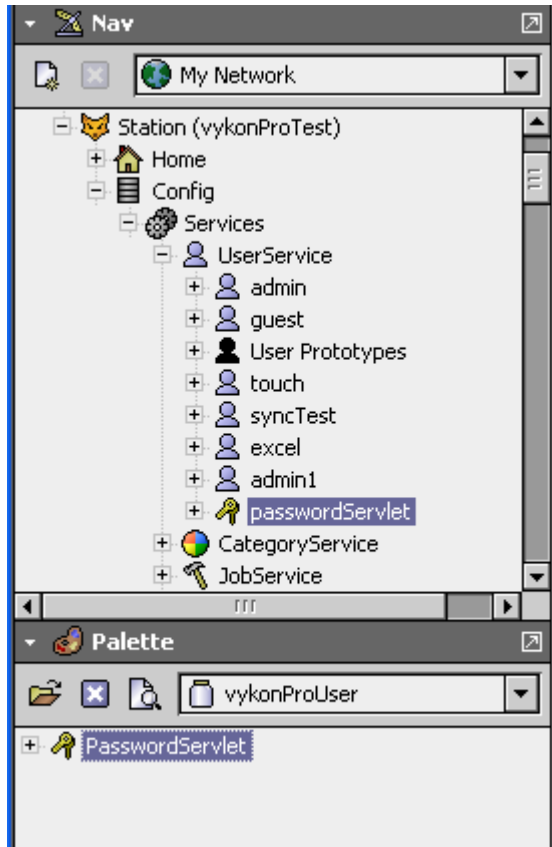
Properties

- **Status** - Status property that reflects the current status of the servlet.
- **Fault Cause** - String property which displays the applicable fault cause if the servlet is in a fault condition.
- **Enabled** - Boolean property which configures whether the servlet is functional or not.
- **Servlet Name** - Readonly string property which defines the servlet name.
- **Expiry Time** - BRelTime property which configures the global password expiration time for all users in the station. This property value can be overridden locally on each user. If the expiry time value is set to zero, the password never expires.
- **Expiry Alert Time** - BRelTime property which configures the amount of time before the user's password is set to expire that the user will be prompted to change their current password during the login process.
- **Min Password Age** - BRelTime property which configures the amount of time which must elapse before a password may be reused.

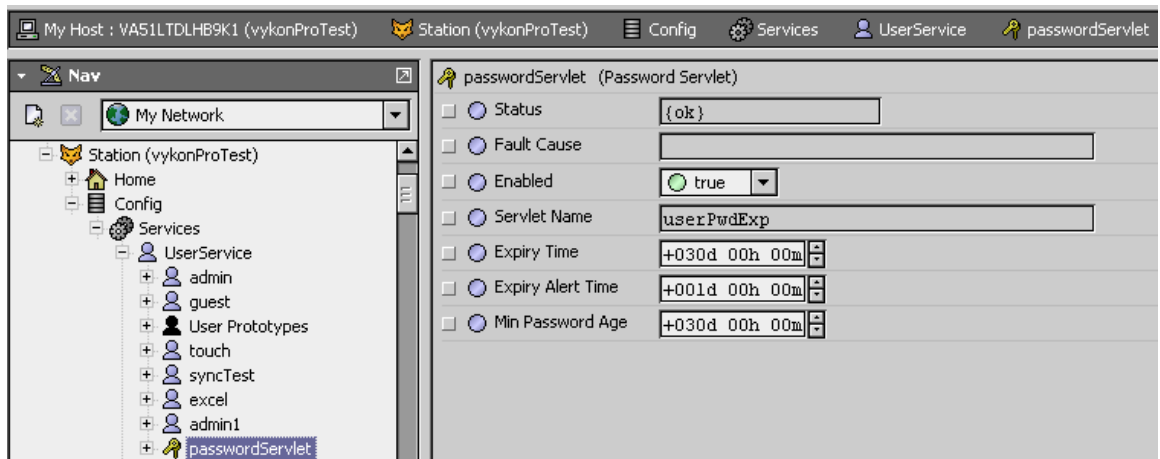


Password Servlet Setup

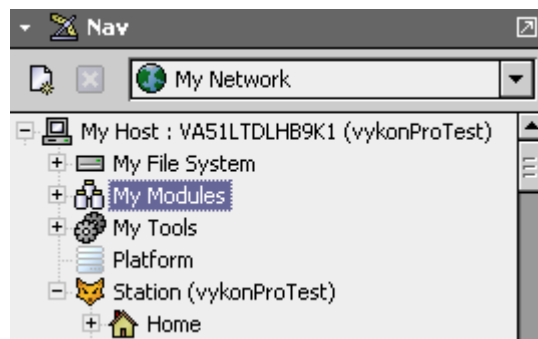
- Open the vykonProUser palette and copy the PasswordServlet component to the User Service in the station.



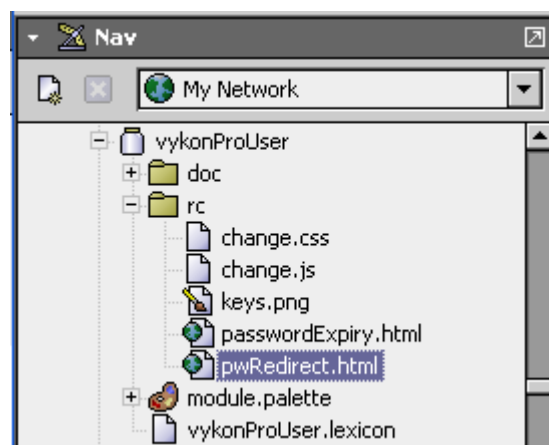
- Go to the properties sheet of the passwordServlet and configure the desired properties.



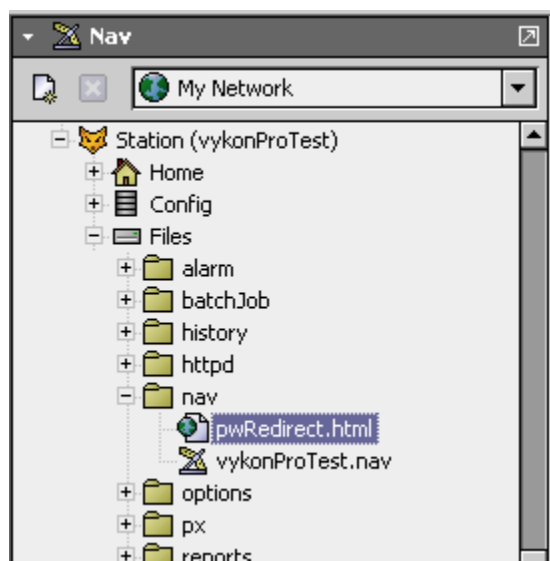
- In the nav tree expand "My Host", expand "My Modules" and locate the vykonProUser module.



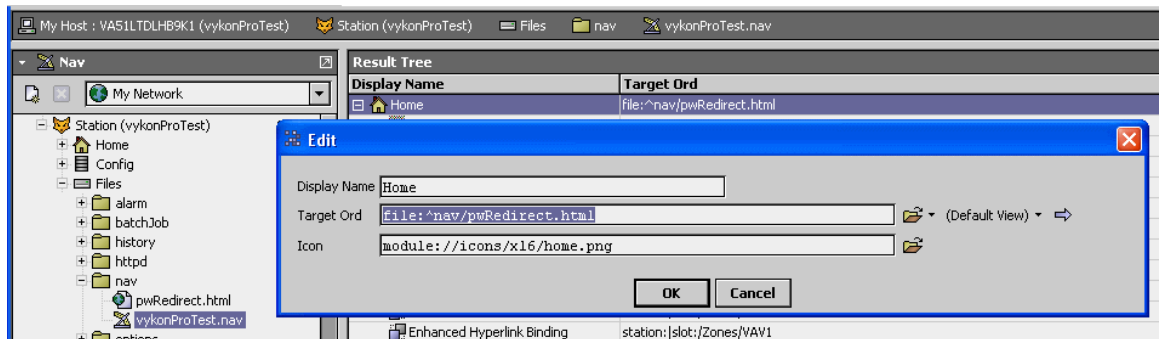
- Expand the vykonProUser module, expand the rc sub folder and copy the pwRedirect.html file.



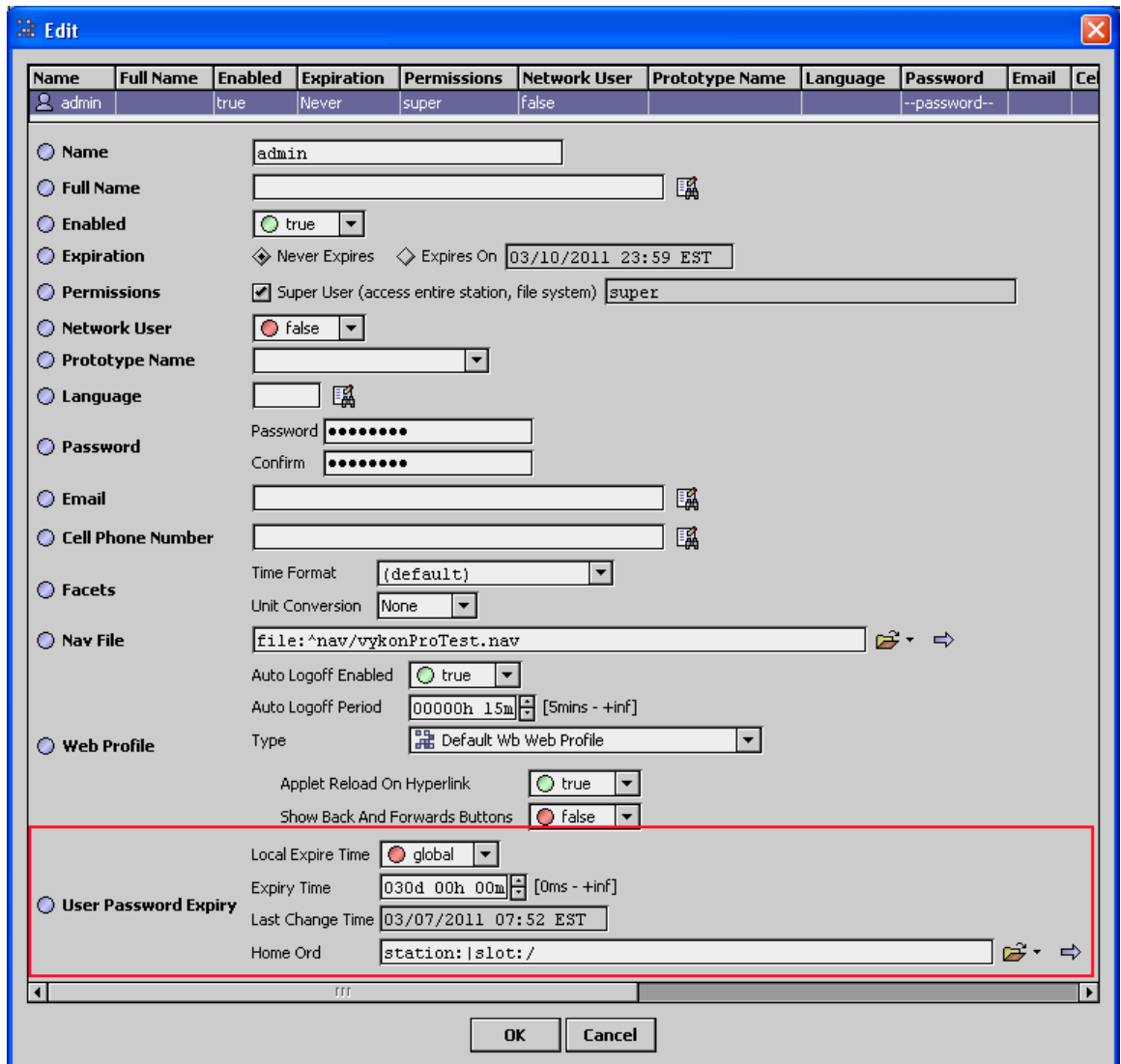
- Paste the pwRedirect.html file to the file space.



- Edit any nav files in the station, changing the Target Ord of the Home property to point to the pwRedirect.html file in the station file space.

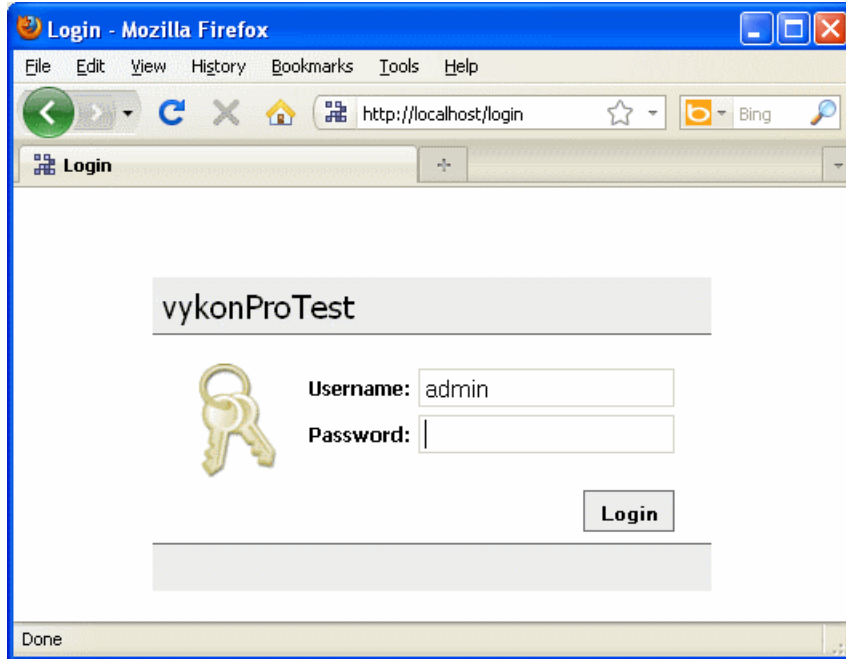


- Edit each user in the station and configure the "User Password Expiry" properties as desired. At a minimum the "Home Ord" property should be configured to point to the original target ord for the Home property in the original nav file.

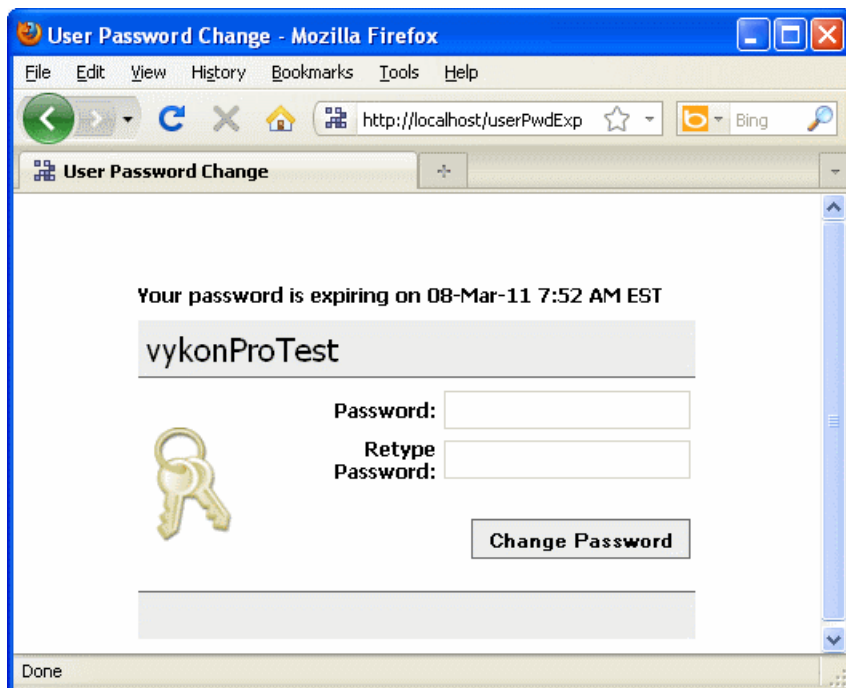


Browser Login Behavior

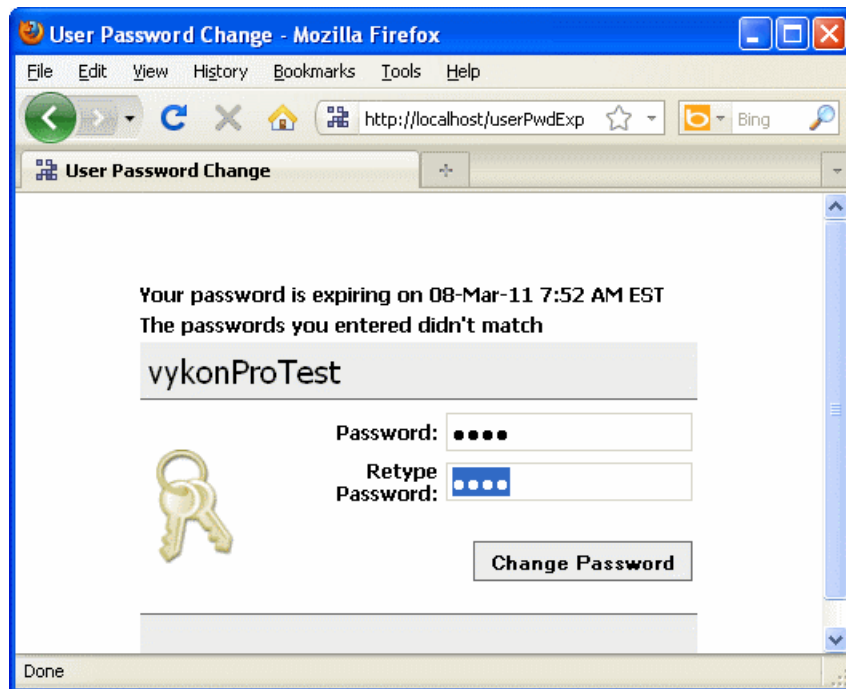
- Once the password servlet is configured the user will be prompted during the normal login process to change their password if it is expiring with the configured expiry alert time. The user will initially be prompted with the standard login screen.



- If the user's password is expiring within the configured time frame, they will be prompted with a dialog to change their current password. Password strength and minimum password age requirements are enforced based on the configuration.



- If the entered password don't meet the requirements, the user will be prompted with an error alerting them to the requirement such as minimum password strength or password age.



- Once a new valid password has been accepted, the user is redirected to the standard login page where they must login using their user name and new password.