

## SEC-ENC-SML Security Enclosure Install Sheet

This document covers the mounting of the VYKON® Security Enclosure model SEC-ENC-SML, used for housing one Remote 2 Reader (SEC-R2R) expansion module for a Security JACE® (SEC-J-602 or SEC-J-616).

**Table 1 SEC-ENC-SML Security Enclosure description.**

Description	Notes
Small-sized enclosure with single DIN rail, tamper switch, key lock. Enclosure is NEMA type 1, with UL 294 listing.	Refer to the <i>Remote 2 Reader (SEC-R2R) Mounting &amp; Wiring Guide</i> , for further details on mounting and wiring the SEC-R2R expansion module inside the SEC-ENC-SML enclosure.

### Included in this Package

Included in this package you should find the following items:

- an SEC-ENC-SML metal enclosure, with mounted DIN rail, and removable hinged door with key lock.
- a hardware bag containing a door tamper switch with two wire leads, screws, nuts, and cable ties.
- this *SEC-ENC-SML Security Enclosure Install Sheet* document, Part Number 10701, Rev. 5

Standard tools are needed for mounting of the enclosure. All materials are included, except for fasteners to mount to the wall.

### Locating and Removing Knockouts

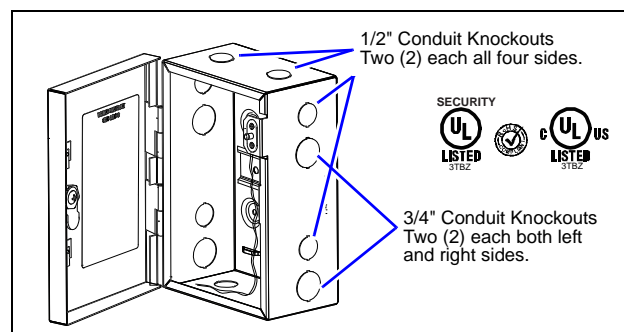
For conduit and cabling entering the enclosure, a total of 12 available knockouts are located on the sides and bottom (see [Figure 1](#)). Two knockout sizes are used:

- 0.95 " (24.1mm) - for 1/2" conduit, both sides, and top and bottom
- 1.20 " (30.5mm) - for 3/4" conduit, sides only

Remove any knockouts required before mounting to the wall. In addition, install the appropriate conduit or cable clamps to the removed knockout holes.

You may wish to mark the location of the four mounting holes in the wall. See [Figure 3](#) on page 2 for mounting hole dimensions.

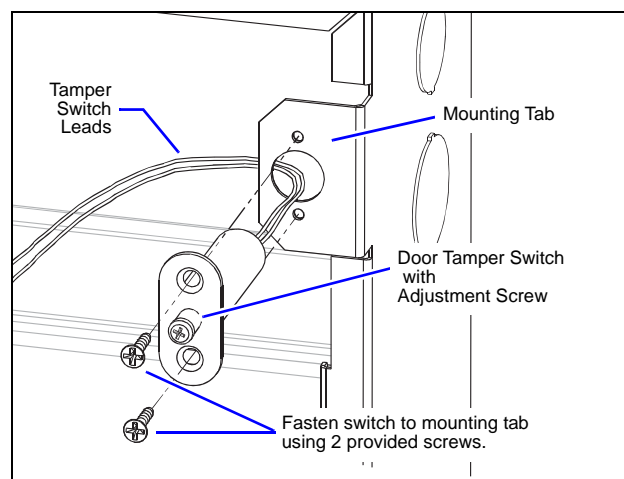
**Figure 1 SEC-ENC-SML enclosure (showing knockouts).**



### Installing the Tamper Switch

Thread the two leads of the door tamper switch through the front of the hole in the mounting tab, and fasten the switch to the tab using the provided Philips head sheet metal screws ([Figure 2](#)).

**Figure 2 Tamper switch installation.**



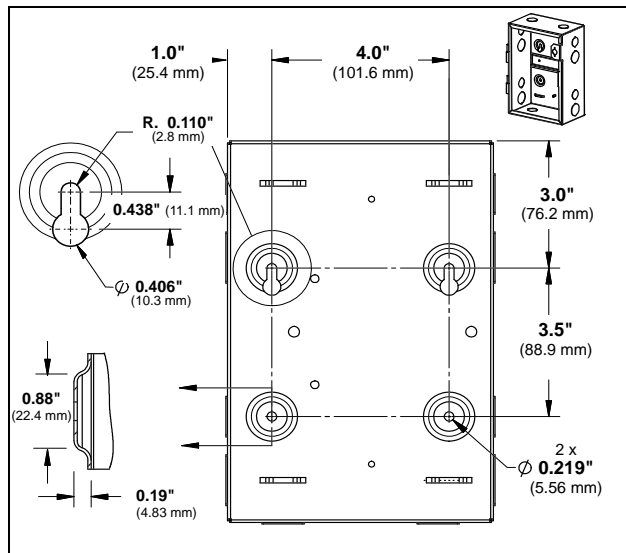
Check the adjustment screw on the tamper switch.

### Mounting the Enclosure

**Note** Mount the SEC-ENC-SML enclosure in an indoor location only. For more environmental details, see the "UL Requirements" section in the *Remote 2 Reader Mounting & Wiring Guide*.

See [Figure 3](#) for mounting hole details.

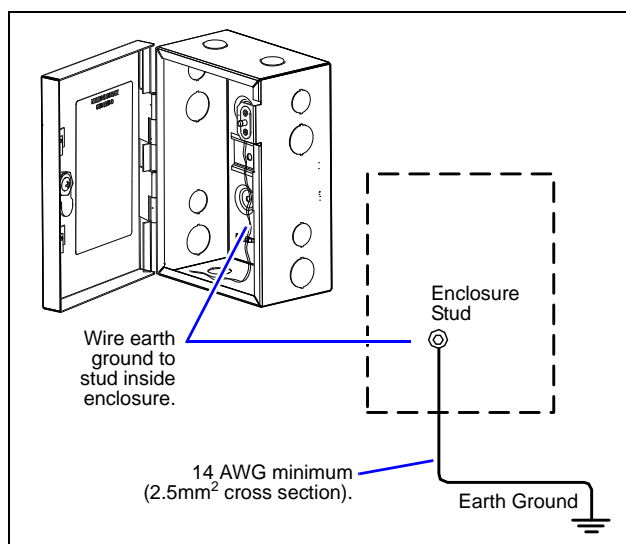
## Installing the Tamper Switch

**Figure 3 SEC-ENC-SML enclosure wall mount dimensions.**

Install fasteners in all 4 mounting holes, tightening securely. For example, if wall anchors were installed in 5/16" holes, use four #14 anchor bolts, or other appropriate fasteners, as needed to securely fasten.

## Earth Grounding

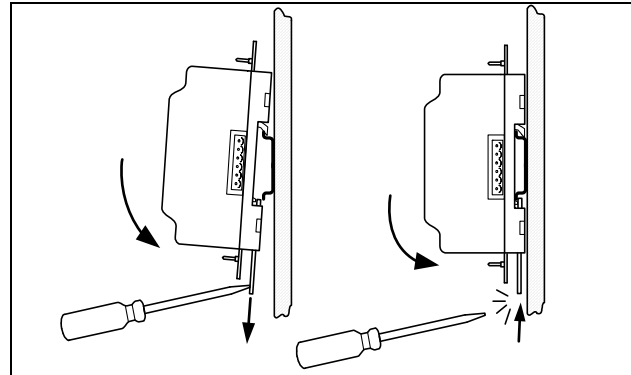
The SEC-ENC-SML enclosure must be connected to a nearby earth ground, using a minimum 14 AWG (2.5mm<sup>2</sup> cross section) wire. See Figure 4 below.

**Figure 4 SEC-ENC-SML enclosure earth grounding.**

Information and/or specifications published here are current as of the date of publication of this document. Tridium, Inc. reserves the right to change or modify specifications without prior notice. The latest product specifications can be found by contacting our corporate headquarters, Richmond, Virginia. Products or features contained herein are covered by one or more U.S. or foreign patents. This document may be copied by parties who are authorized to distribute Tridium products in connection with distribution of those products, subject to the contracts that authorize such distribution. It may not otherwise, in whole or in part, be copied, photocopied, reproduced, translated, or reduced to any electronic medium or machine-readable form without prior written consent from Tridium, Inc. Complete confidentiality, trademark, copyright and patent notifications can be found at: <http://www.tridium.com/galleries/SignUp/Confidentiality.pdf>. JACE, Niagara Framework, Niagara AX Framework and the Sedona Framework are trademarks of Tridium, Inc. © 2013 Tridium, Inc.

## Mounting the SEC-R2R

The SEC-R2R module mounts on the interior DIN rail of the SEC-ENC-SML enclosure. See Figure 5 below.

**Figure 5 Mounting SEC-R2R onto DIN rail.**

Refer to the *Remote 2 Reader Module (SEC-R2R) Mounting & Wiring Guide* for additional mounting information, and for all SEC-R2R wiring details.

## Replacement Parts

Standard replacement parts are listed in Table 2 and can be ordered from stock without restriction. These parts cannot be returned for credit, and should be disposed of in an appropriate manner.

**Table 2 SEC-ENC-SML enclosure replacement parts.**

Part Number	Description
10765	Enclosure door key lock with 2 keys.
10781	Replacement tamper switch.

## Related Documentation

For more information on mounting and wiring a VYKON Security system, refer to the following:

- *Security JACE (SEC-J-602, SEC-J-616) Mounting & Wiring Guide*, part number 12822
  - For UL-294 use *Security JACE (SEC-J-601) Mounting & Wiring Guide*, part number 10908
- *Remote 2 Reader Module (SEC-R2R) Mounting & Wiring Guide*, part number 10698
- *SEC-ENC-Mxx and SEC-ENC-Lxx Security Enclosure Install Guide*, part number 10700